

Learn How to Create a Google Account

Setting up a Google Account is fast and easy. It gives you access to post comments on Blogspot.com. This is a vital step in helping your neighbor to find their lost pet.

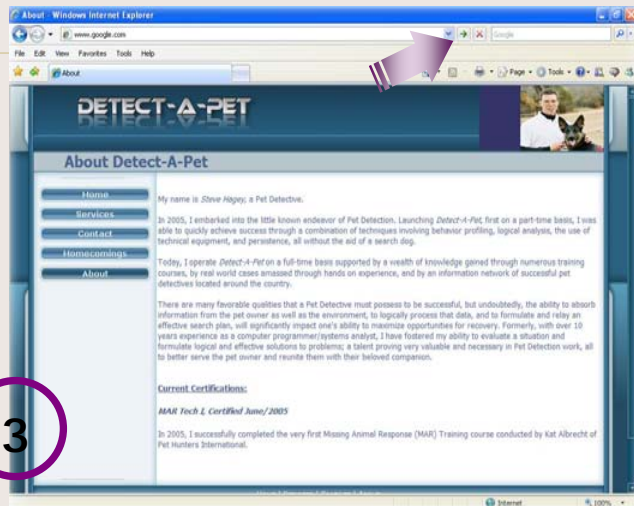
1

Navigate to the Google Home Page by typing www.google.com in your web browser address line.



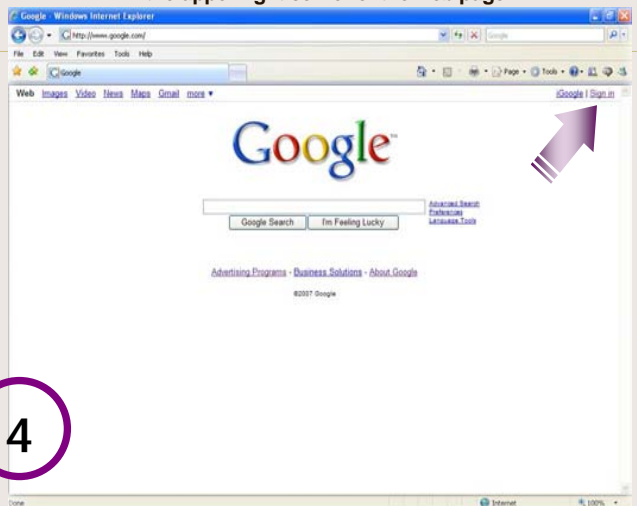
2

After typing the text, click the **green arrow** button to the right of the address line or press the **Enter** key on the keyboard.



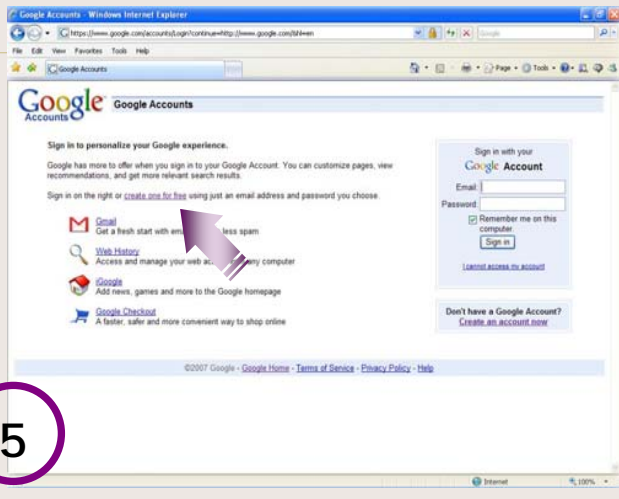
3

Your browser will navigate to the Google home page. To access the link to create a Google Account, click **Sign in** in the upper right corner of the web page.

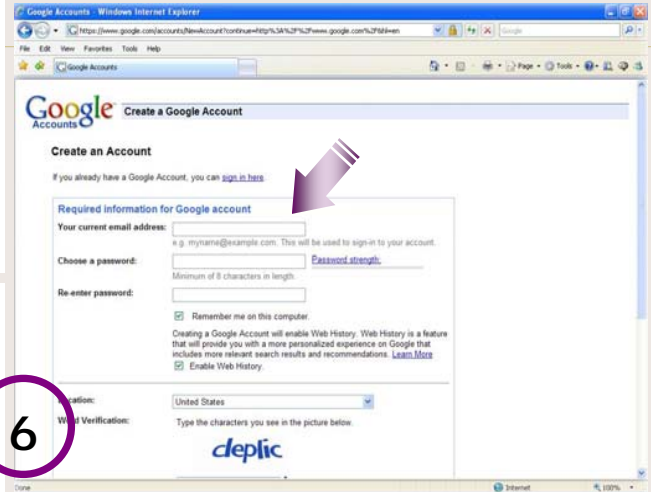


4

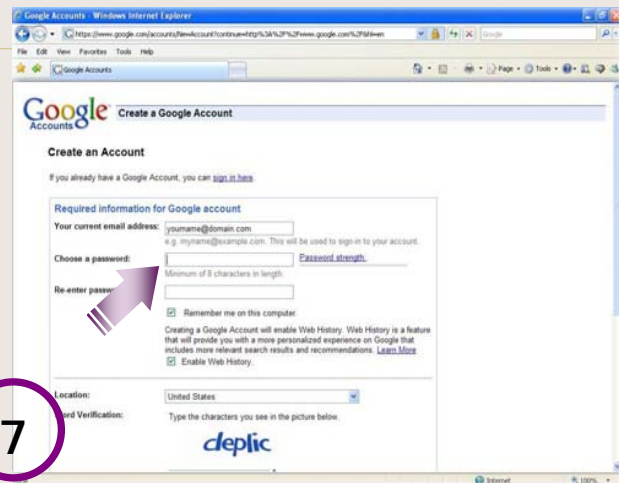
Your browser will navigate to the *Google Accounts Page*.
To begin creating your Google account, click **create one for free**.



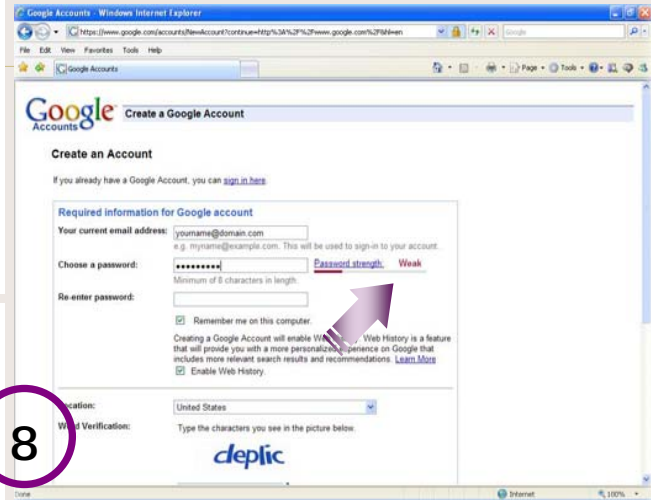
The *Create a Google Account* web page opens.
Enter an existing email address in **Your current email address**.
Please Note: This can be any personal email account you currently use.



Type a password of your choice
using a combination of at least 8 letters and numbers.



Please note that using just eight letters provides weak security.



Adding numbers to the password increases the strength of the security protection for your Google account.

Google Accounts - Windows Internet Explorer
https://www.google.com/accounts/NewAccount?continue=http://www.google.com/22f81en

Google Accounts

Create a Google Account

If you already have a Google Account, you can [sign in here](#).

Required information for Google account

Your current email address:
e.g. myname@example.com. This will be used to sign-in to your account.

Choose a password: [Password strength: Strong](#)
Minimum of 8 characters in length.


Re-enter password:

Remember me on this computer.

Creating a Google Account will enable Web History. Web History is a feature that will provide you with a more personalized experience on Google that includes more relevant search results and recommendations. [Learn More](#)

Enable Web History.

Location:

Word Verification: Type the characters you see in the picture below.


Re-type the password in the **Re-enter password:** text box exactly as it was entered in the **Choose a password:** text box.

Google Accounts - Windows Internet Explorer
https://www.google.com/accounts/NewAccount?continue=http://www.google.com/22f81en

Google Accounts

Create a Google Account

If you already have a Google Account, you can [sign in here](#).

Required information for Google account

Your current email address:
e.g. myname@example.com. This will be used to sign-in to your account.

Choose a password: [Password strength: Strong](#)
Minimum of 8 characters in length.


Re-enter password:

Remember me on this computer.

Creating a Google Account will enable Web History. Web History is a feature that will provide you with a more personalized experience on Google that includes more relevant search results and recommendations. [Learn More](#)

Enable Web History.

Location:

Word Verification: Type the characters you see in the picture below.


Your password is entered and re-entered for confirmation. Leaving **Remember me on this computer** and **Enable Web History** boxes checked is optional.

Google Accounts - Windows Internet Explorer
https://www.google.com/accounts/NewAccount?continue=http://www.google.com/22f81en

Google Accounts

Create a Google Account

If you already have a Google Account, you can [sign in here](#).

Required information for Google account

Your current email address:
e.g. myname@example.com. This will be used to sign-in to your account.

Choose a password: [Password strength: Strong](#)
Minimum of 8 characters in length.


Re-enter password:

Remember me on this computer.

Creating a Google Account will enable Web History. Web History is a feature that will provide you with a more personalized experience on Google that includes more relevant search results and recommendations. [Learn More](#)

Enable Web History.

Location:

Word Verification: Type the characters you see in the picture below.


Please remember to make a note of your password in a secure location.

Scroll down in the **Create an Account** window to view the contents in the lower portion of the page. The **Location:** text box entry defaults to United States.


Google Accounts - Windows Internet Explorer
https://www.google.com/accounts/NewAccount?continue=http://www.google.com/22f81en

Google Accounts

that will provide you with a more personalized experience on Google that includes more relevant search results and recommendations. [Learn More](#)

Enable Web History.

Location:

Word Verification: Type the characters you see in the picture below.


Letters are not case-sensitive

Terms of Service: Please check the Google Account information you've entered above (feel free to change anything you like), and review the Terms of Service below.

[Printable Version](#)

Google Terms of Service

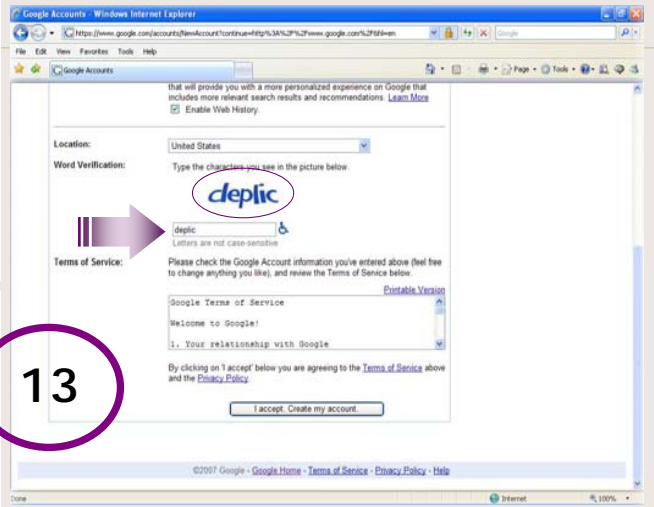
Welcome to Google!

1. Your relationship with Google

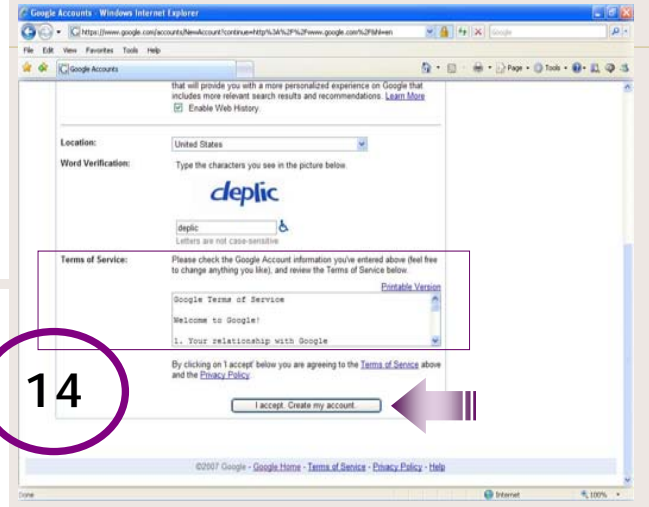
By clicking on "I accept" below you are agreeing to the [Terms of Service](#) above and the [Privacy Policy](#).

©2007 Google - [Google Home](#) - [Terms of Service](#) - [Privacy Policy](#) - [Help](#)

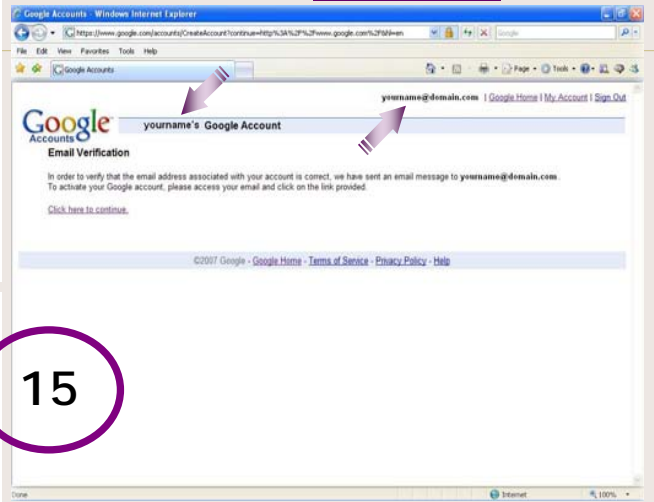
To complete the **Word Verification** step, type the characters as they appear on the screen in the text box provided.
Please note that the letter entries are not case-sensitive.



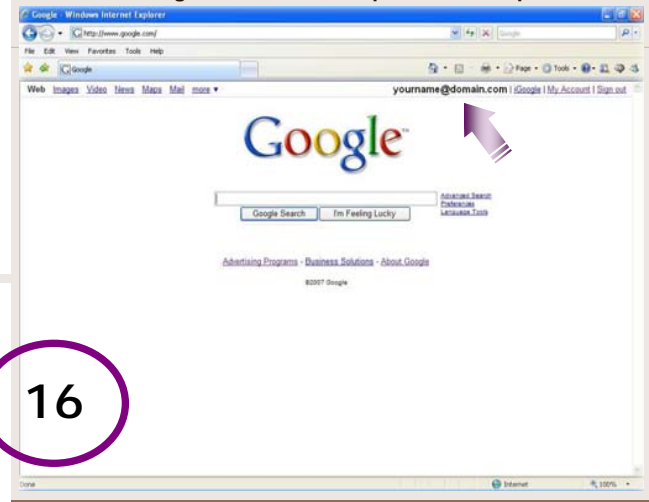
Please check the information you've entered in the **Create an Account** page for accuracy, read the **Terms of Service**, and click the **I accept. Create my account.** button to complete the account creation process.



Your Google Account is created and the notice of **Email Verification** is displayed. Please note that your email address now appears on the Google web page. Click the hyperlink **Click here to continue.**



You are returned to the **Google** home page, signed in under your new Google account email address. The Google account creation process is complete.



A graphic of a spiral-bound notebook with a brown cover and a light beige, textured paper. The spiral binding is on the left side. The text is centered on the page.

*Thank you
for taking the time
to create a Google Account.*

Please remember that your Google Account gives you access to post comments on Blogspot.com. This is a vital step in helping your neighbor to find their lost pet.

17